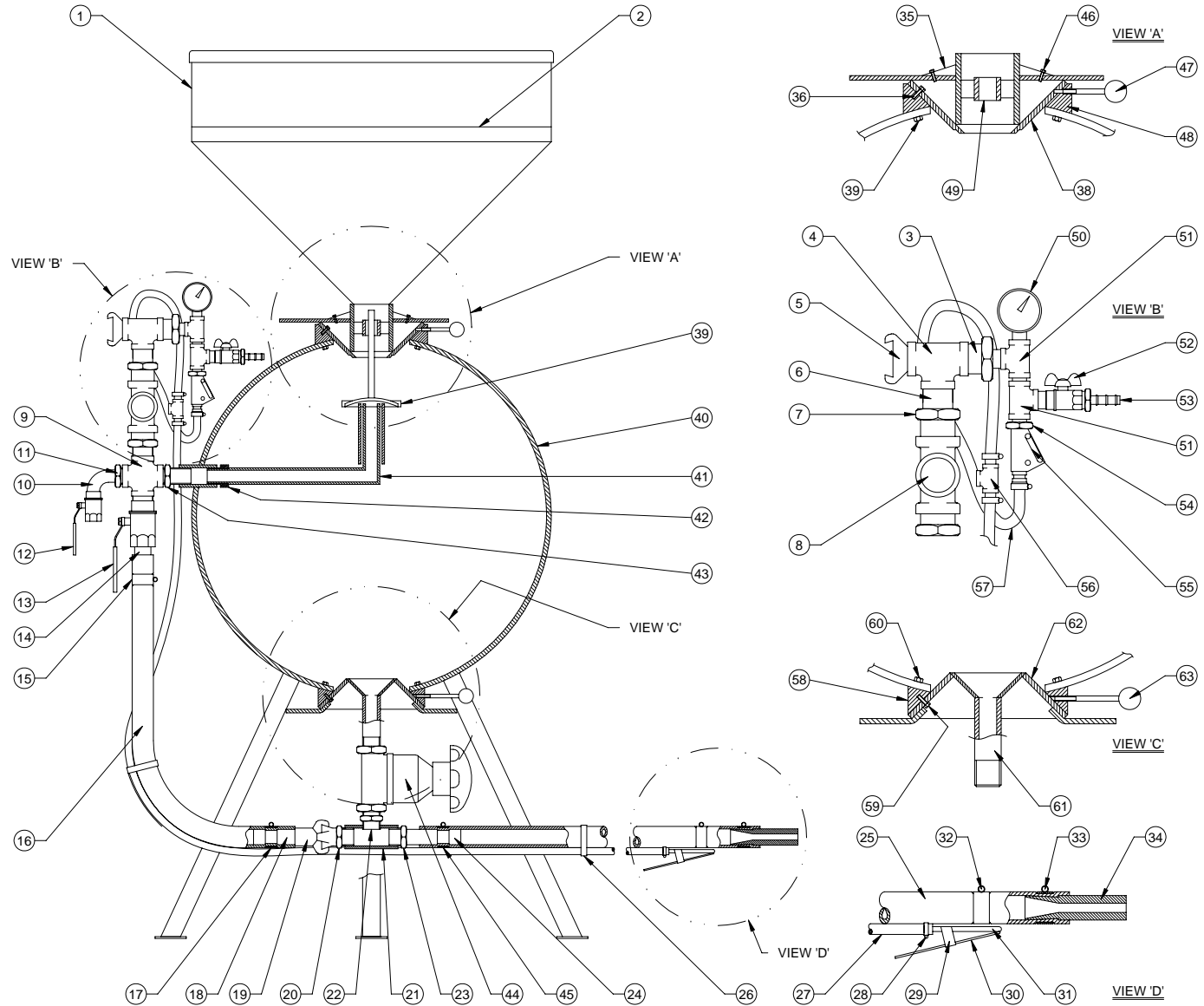


ITEM	PART No.	DESCRIPTION
1	10	FUNNEL
2	11	SLEEVE
3	RC/2	REDUCER
4	RC/14	TEE
5	RC/22	SNAP COUPLING
6	RC/3	NIPPLE
7	RC/2	REDUCER
8	RC/1	AIR INLET VALVE
9	RC/14	MOUNTING CROSS
10	RC/9	BEND
11	RC/2	REDUCER
12	RC/15	EXHAUST VALVE
13	RC/23	BOOSTER VALVE
14	RC/19	STUB PIPE
15	RC/20	HOSE CLIPS
16	RC/21	COUPLING HOSE
17	RC/20	HOSE CLIPS
18	RC/13	STUB PIPE
19	RC/22	SNAP COUPLING
20	RC/22	SNAP COUPLING
21	14A	'T' PIECE
22	14B	HEXAGON NIPPLE
23	RC/2	REDUCER (OPTIONAL)
24	15C	STUB PIPE
25	15A	BLAST HOSE
26		HOSE TIE
27	RC/16	PILOT HOSE
28	RC/20	HOSE CLIP
29	RC/17	CONTROL LEVER
30	RC/17A	PLUG
31	RC/17B	SPRING
32	RC/20	HOSE CLIP
33	RC/20	HOSE CLIP
34	15D	NOZZLE
35	2B	COVER PLATE
36	12B	LOCKING SCREWS
37	12C	SET SCREWS
38	12D	GASKET
39	4	MUSHROOM VALVE
40	1	BODY ASSEMBLY
41	9	BALANCE PIPE ASSEMBLY
42	RC/2	REDUCER
43	1B	REDUCER
44	5	PINCH VALVE ASSEMBLY
45	RC/20	HOSE CLIP
46	2C	SCREWS
47	12F	LOCKING PIN
48	12	UPPER SEALING RING ASSEMBLY
49	2	TOP CONE ASSEMBLY
50	RC/7	PRESSURE GAUGE
51	RC/6	BRANCH TEE
52	RC/13	HELMET HOSE
53		HOSE TAIL
54		UNION
55	RC8	FLOW CONTROL VALVE
56	RC12	PILOT TEE
57	RC/10	LINK HOSE
58	13	LOWER SEALING RING ASSEMBLY
59	13B	LOCKING SCREWS
60	13C	SET SCREWS
61	3	BOTTOM CONE ASSEMBLY
62	13D	GASKET
63	13F	LOCKING PIN



Rev	Alterations	Date	By	CUSTOMER	ALL DIMENSIONS IN MM UNLESS OTHERWISE STATED	DRAWN R.P.	DATE 15/11/06	SCALE 1:7	
					OPEN DIMENSION TOLERANCES	TITLE			
					UP TO 30 ± 0.2	GENERAL ASSEMBLY AND PARTS LIST FOR 'A' RANGE BLAST MACHINE			
					31 TO 150 ± 0.5				
					151 TO 500 ± 1.0	DRAWING No. 08-20001			
					501 TO 1000 ± 2.0	ISSUE No. A			
					OVER 1000 ± 2.0 PER 1000				
					ANGLES ± 1°				

**POWER BLAST INTERNATIONAL LTD.**